

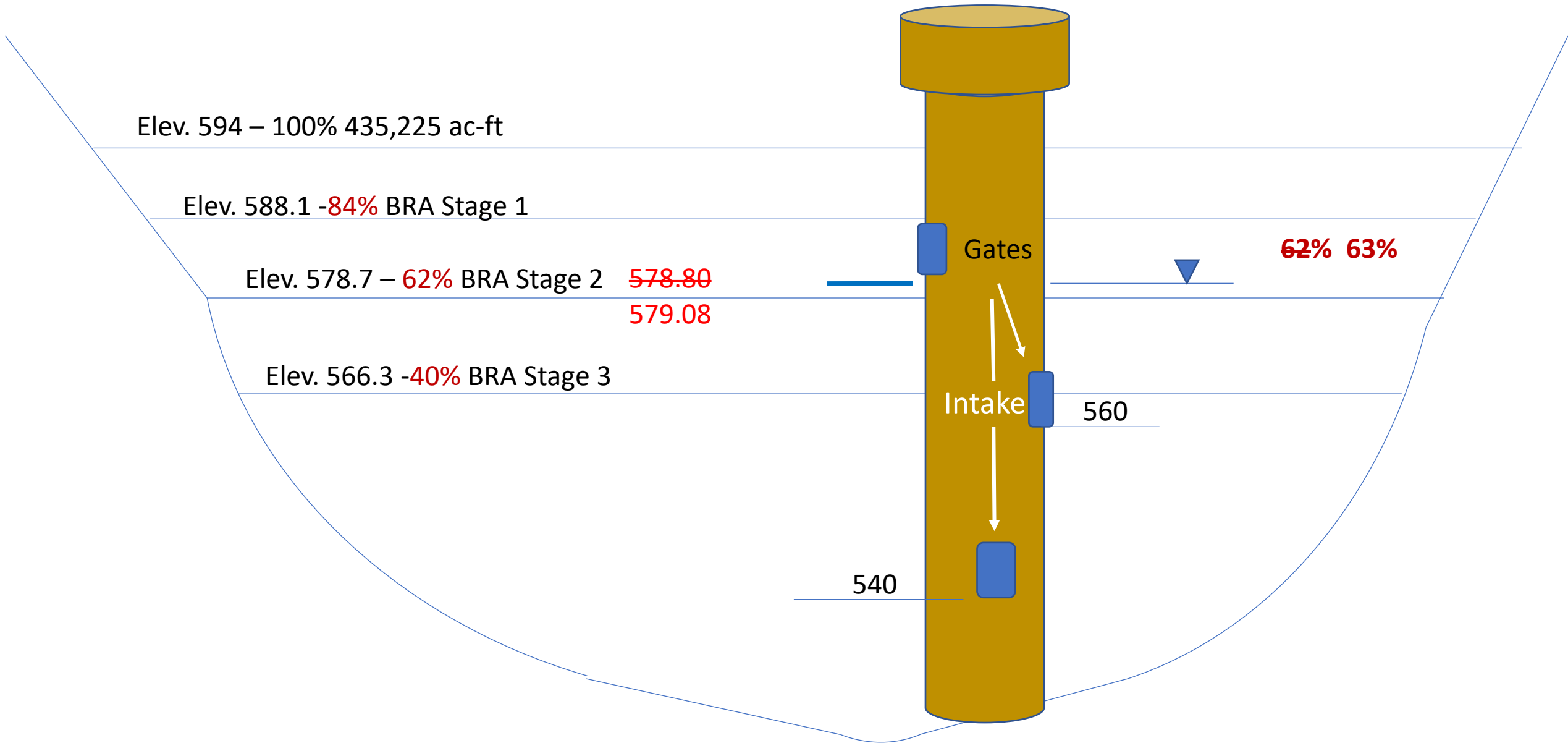
# Extreme Case Scenario

Lake Belton and Lake Stillhouse Hollow

February 7, 2024

# Lake Belton Status

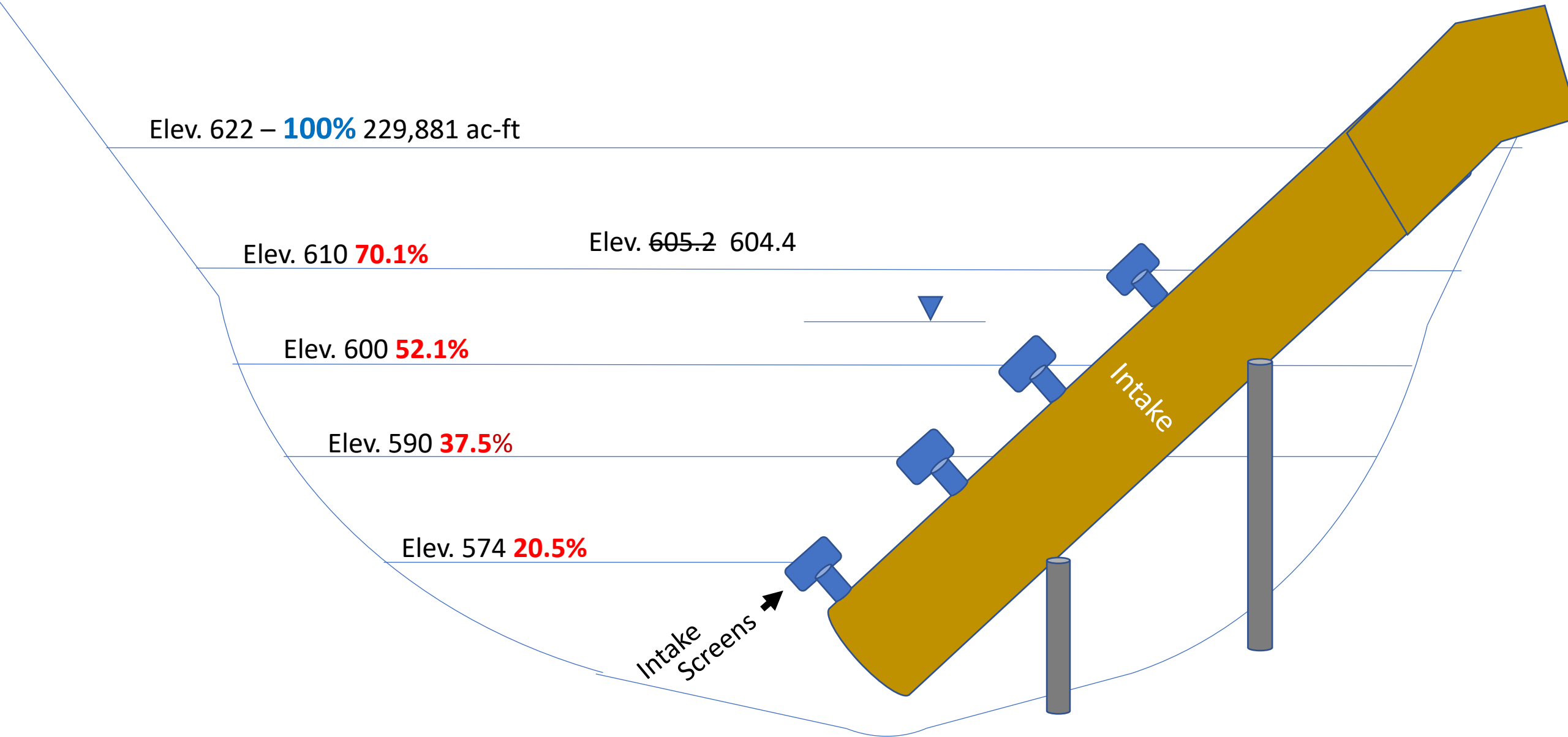
January 23, 2024



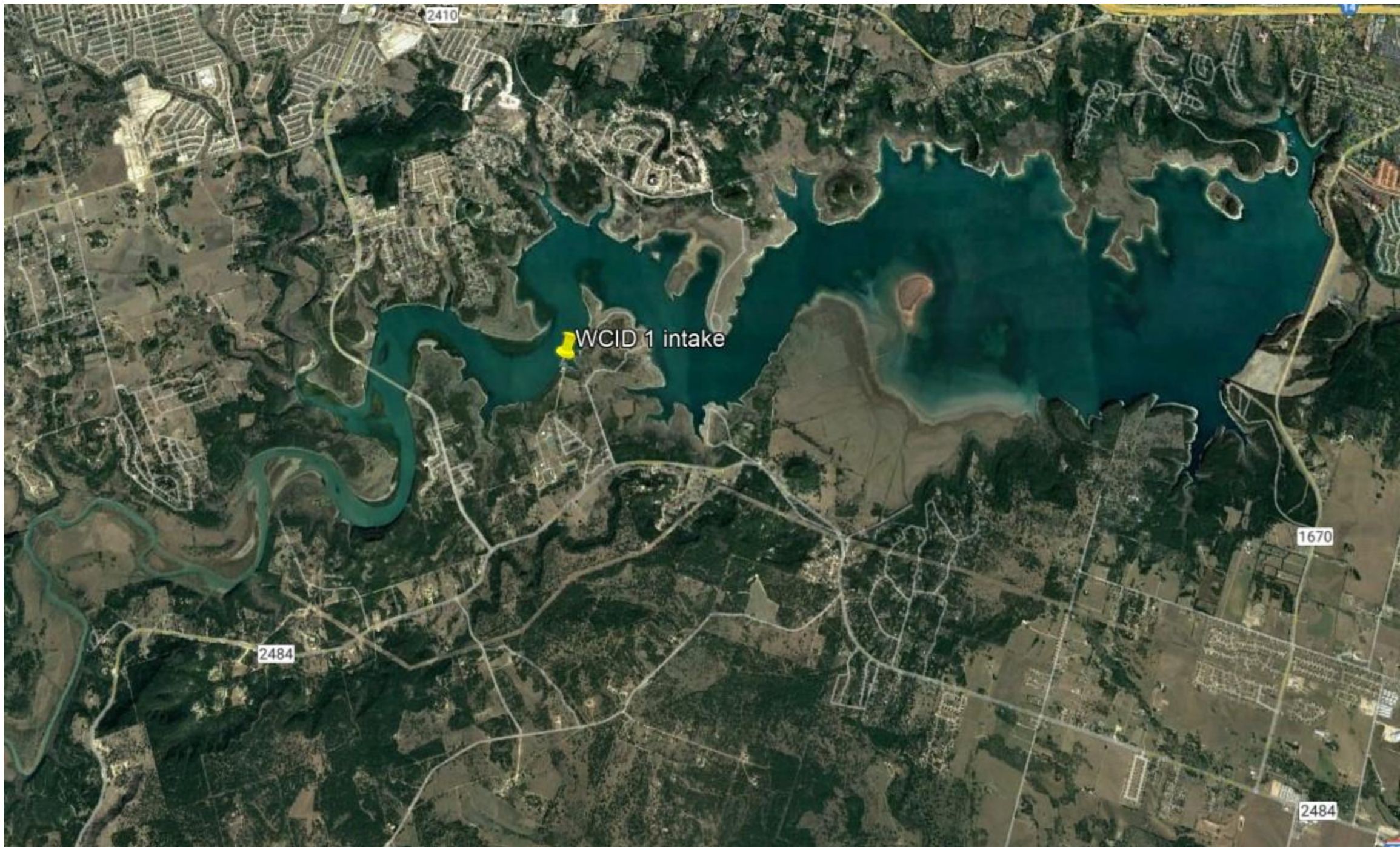


# Lake Stillhouse Hollow

Status 1-23-24



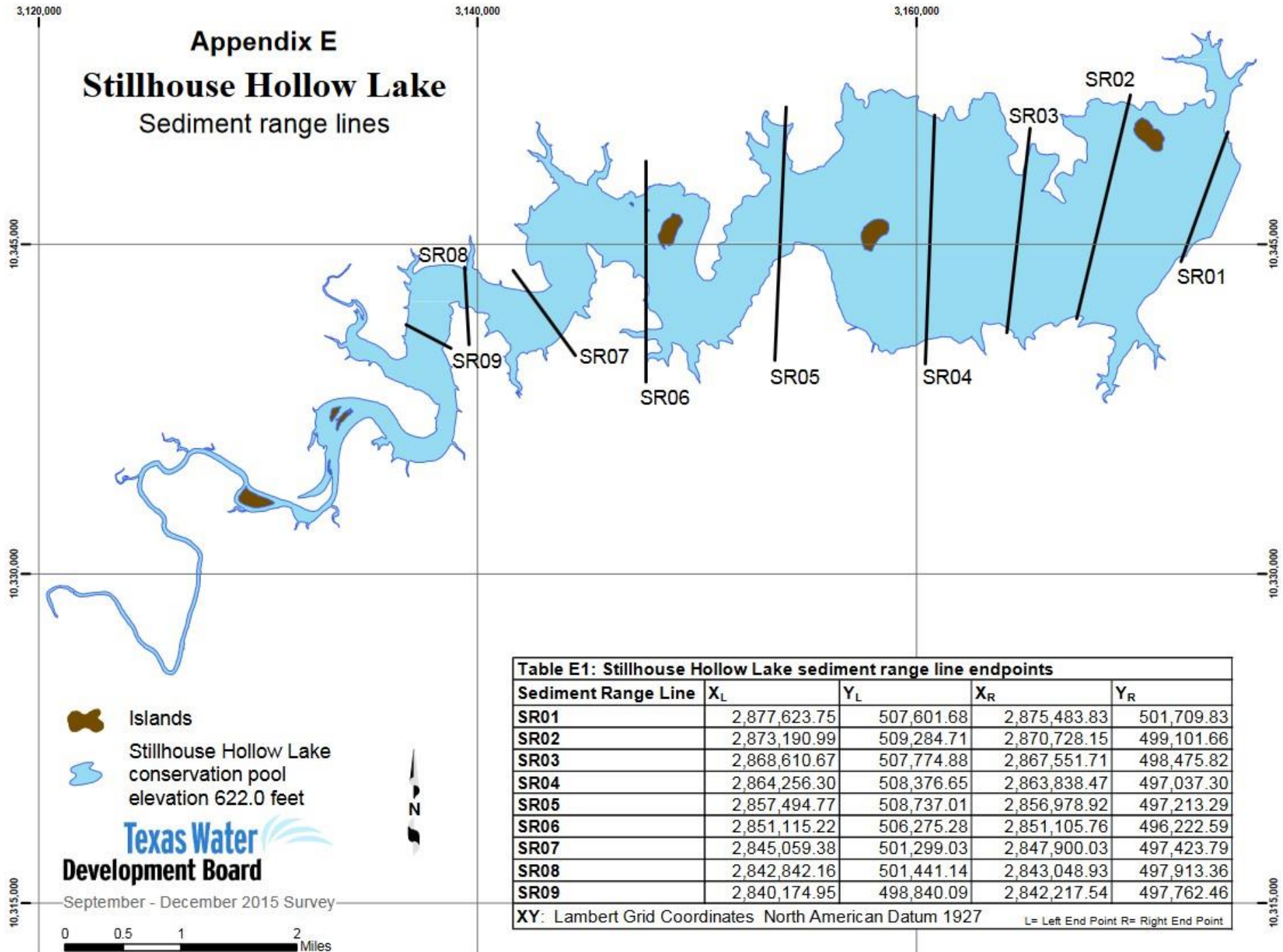




# Appendix E

## Stillhouse Hollow Lake

### Sediment range lines



**Table E1: Stillhouse Hollow Lake sediment range line endpoints**

Sediment Range Line	X <sub>L</sub>	Y <sub>L</sub>	X <sub>R</sub>	Y <sub>R</sub>
SR01	2,877,623.75	507,601.68	2,875,483.83	501,709.83
SR02	2,873,190.99	509,284.71	2,870,728.15	499,101.66
SR03	2,868,610.67	507,774.88	2,867,551.71	498,475.82
SR04	2,864,256.30	508,376.65	2,863,838.47	497,037.30
SR05	2,857,494.77	508,737.01	2,856,978.92	497,213.29
SR06	2,851,115.22	506,275.28	2,851,105.76	496,222.59
SR07	2,845,059.38	501,299.03	2,847,900.03	497,423.79
SR08	2,842,842.16	501,441.14	2,843,048.93	497,913.36
SR09	2,840,174.95	498,840.09	2,842,217.54	497,762.46

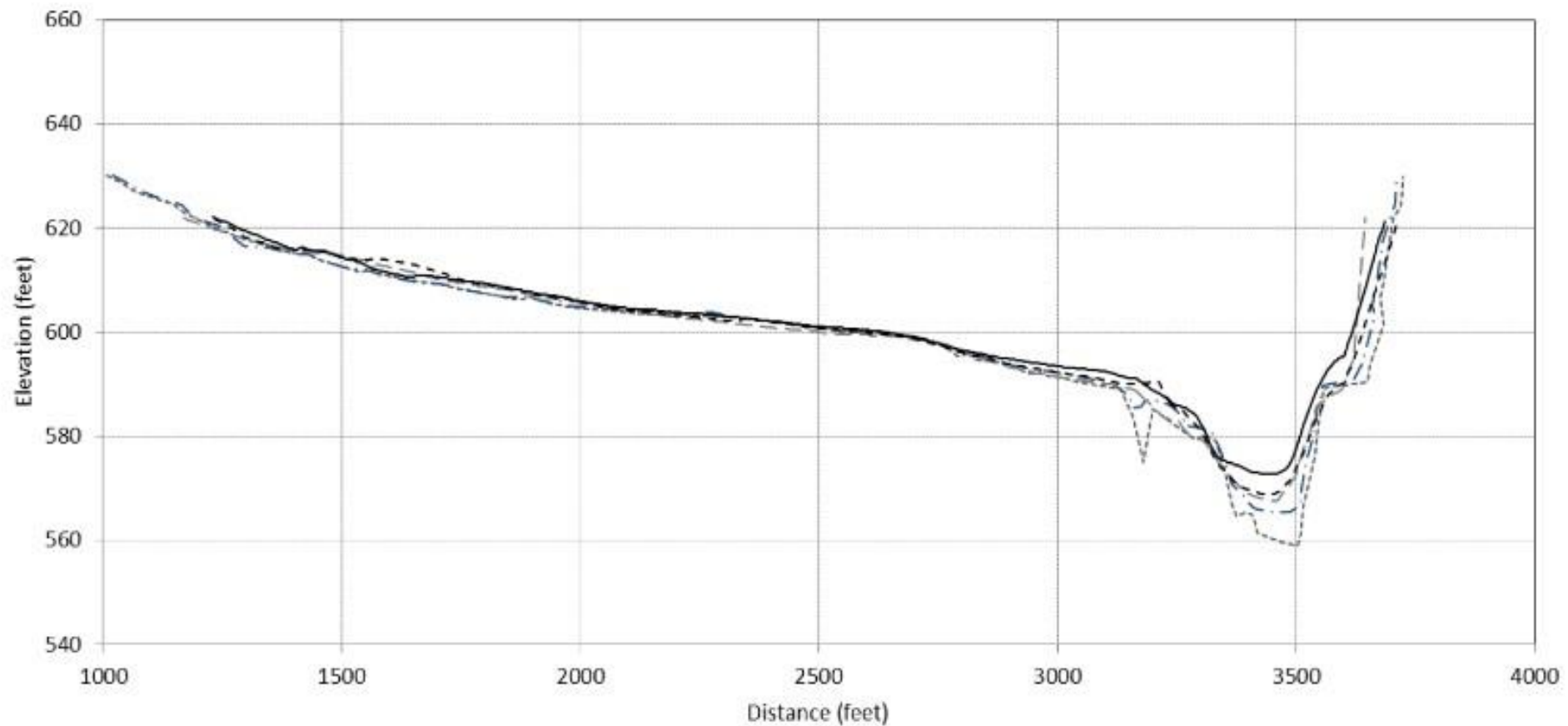
XY: Lambert Grid Coordinates North American Datum 1927 L= Left End Point R= Right End Point

 Islands  
 Stillhouse Hollow Lake conservation pool elevation 622.0 feet  


September - December 2015 Survey

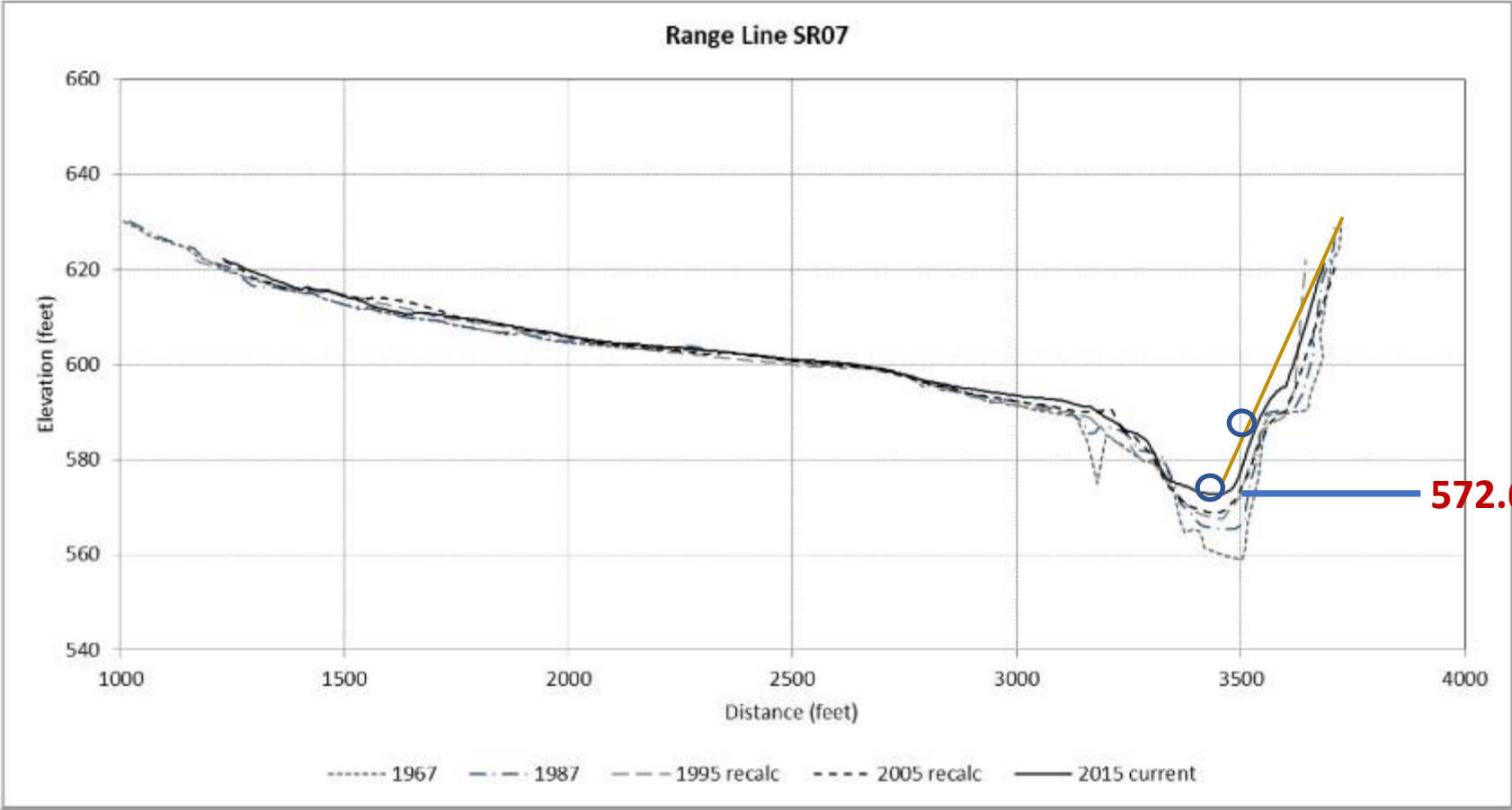


Range Line SR07



..... 1967    - . - . 1987    - - - 1995 recalc    - - - - 2005 recalc    ——— 2015 current









52,300.00 cfs

an hour ago



60,900.00 cfs

Value Max

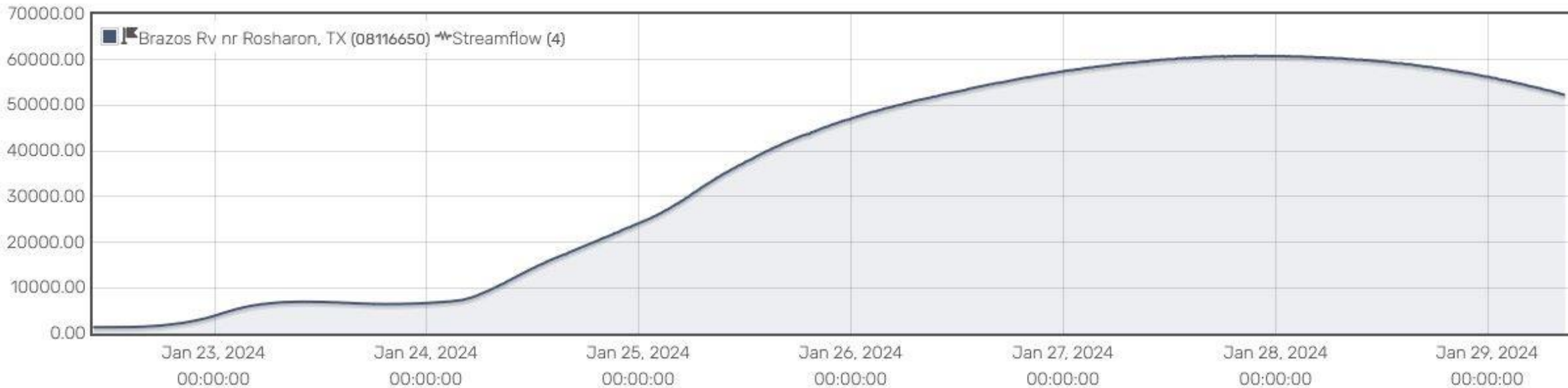


1,370.00 cfs

Value Min

22 January, 2024 - 29 January, 2024

Markers Legend



Data 667

IF

Download

2024-01-29 08:45:00

52,300.00 cfs

2024-01-29 08:30:00

52,400.00 cfs



52,300.00 cfs

an hour ago



60,900.00 cfs

Value Max

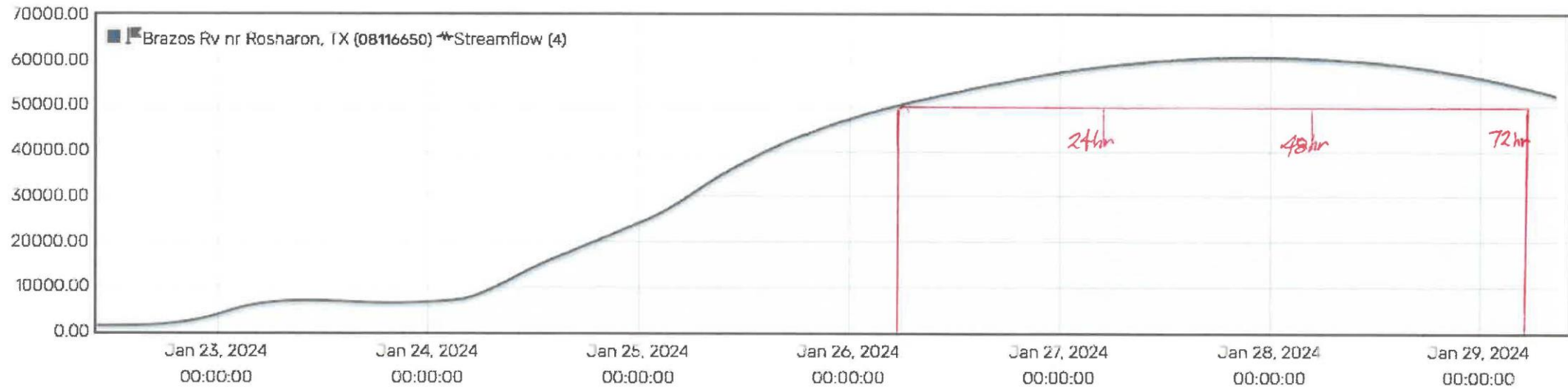


1,370.00 cfs

Value Min

22 January, 2024 - 29 January, 2024

Markers Legend



Data 667

2024-01-29 08:45:00

2024-01-29 08:30:00

$$\frac{50,000 \text{ cfs}}{\text{SEC}} \left| \frac{60 \text{ SEC}}{\text{MIN}} \right| \frac{60 \text{ MIN}}{\text{HR}} \left| \frac{7.48 \text{ GAL}}{\text{cfs}} \right| = 1,346,400,000 \text{ GAL/HR}$$

$$\times 72 \text{ HRS} = 96.94 \text{ BILLION GALS}$$

$$\text{OR } 297,500 \text{ ac-ft}$$

WCID 1 2023 ANNUAL USAGE 36,088 ac-ft

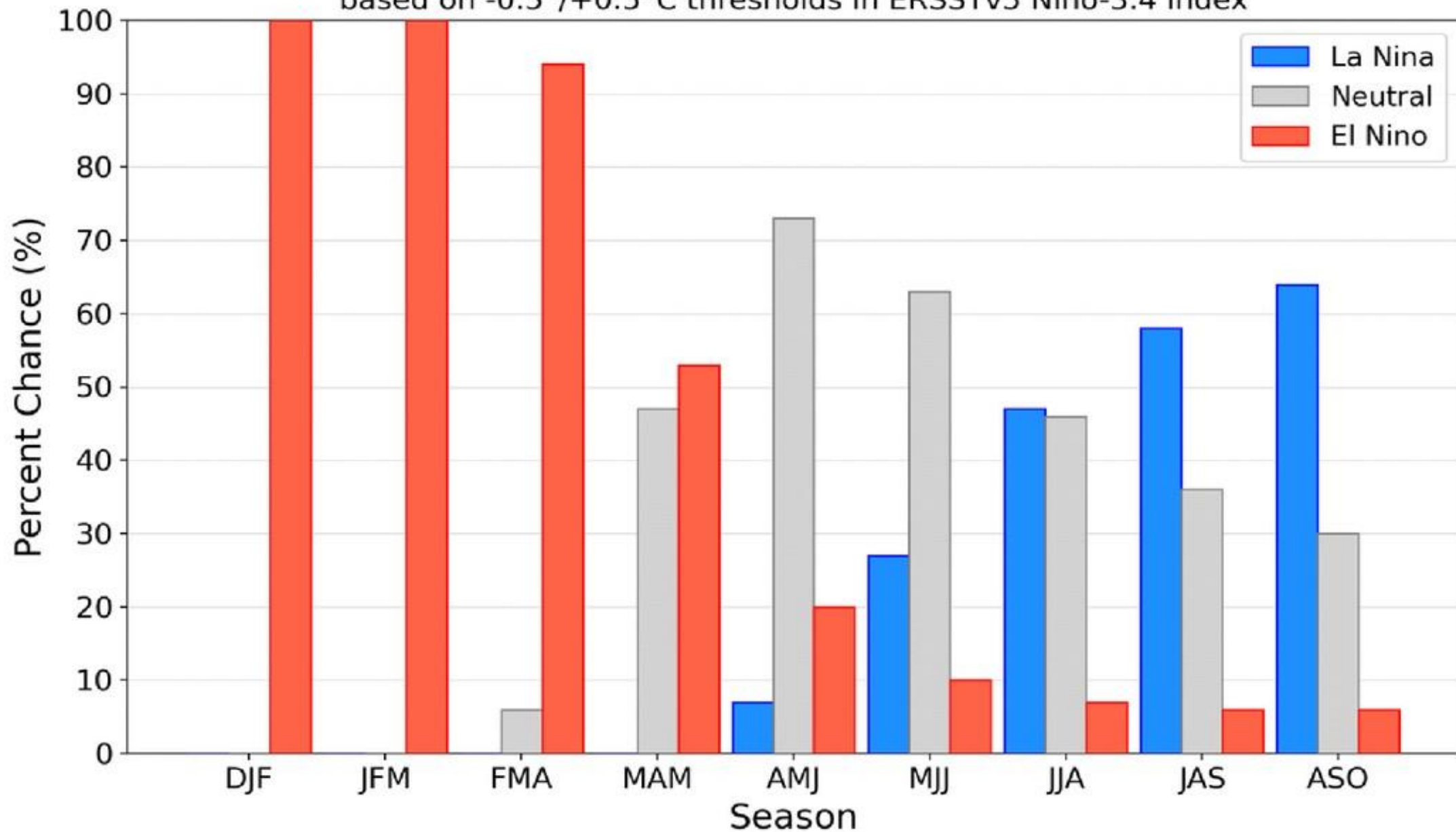
52,300.00 cfs

52,400.00 cfs

Download

# Official NOAA CPC ENSO Probabilities (issued Jan. 2024)

based on  $-0.5^{\circ}/+0.5^{\circ}\text{C}$  thresholds in ERSSTv5 Niño-3.4 index



# Questions?

[r.garrett@wcid1.org](mailto:r.garrett@wcid1.org)